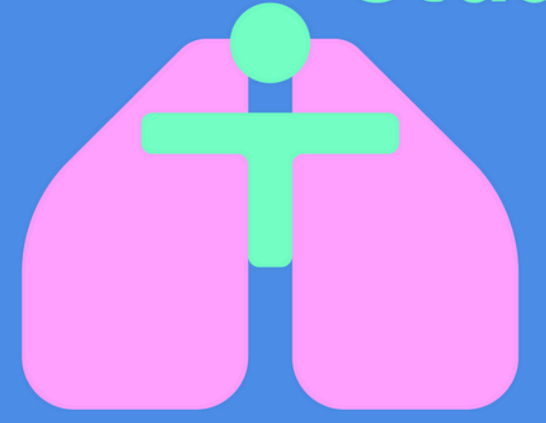


Help us improve chest health in children with cerebral palsy

CHesti
study



Children and young people with cerebral palsy often have chest health problems, like, noisy breathing, a rattly chest or difficulty coughing, swallowing or clearing mucus. This can lead to chest infections and hospital stays

We are looking for:

- ✓ People (8-25years) with cerebral palsy
- ✓ Parents or carers
- ✓ Health, social and educational professionals
- ✓ Researchers

to help us agree on the most important ways to measure chest health in children and young people with cerebral palsy

...in a series of 3 short online surveys, called a Delphi study.

The most important measures will be recommended for use in clinical practice and in research studies.

Scan here to start the survey or click the link below



Please click Survey Link HERE

QUESTIONS? CONTACT US

Email us: rachel.knightlozano@plymouth.ac.uk

Visit us: www.plymouth.ac.uk/research/chesti-study



SUPPORTED BY

NIHR

National Institute for
Health and Care Research



UNIVERSITY OF
PLYMOUTH

UCL
GREAT ORMOND STREET
INSTITUTE OF CHILD HEALTH



University
of Exeter