

# getOnYourTrike

## APPLICATION

Cerebral  
Palsy Society   
*freedom & choice*

Parents Name: \_\_\_\_\_

Membership Number: (if known) \_\_\_\_\_

Phone: \_\_\_\_\_

Mobile: \_\_\_\_\_

Trike User's Name: \_\_\_\_\_

Trike User's Age: \_\_\_\_\_

Please send this form to the Society for processing. You can:

- Apply online from our website after logging into your member profile. Please let us know if you need more information on how to do this.
- Scan and email this form to [cpsociety@cpsociety.org.nz](mailto:cpsociety@cpsociety.org.nz)
- Or post to CP Society:

CP Society  
DX Box CP 31005  
Newmarket  
Auckland

By signing below, you agree to the Terms and Conditions located on the back of this application.

Signed: \_\_\_\_\_

Date: \_\_\_\_\_

### OVERVIEW

The CP Society has a range of specially designed bikes for the use of our members with cerebral palsy. There are three sizes available that are suitable for children aged between 3 – 14 years.

The programme is available to members throughout New Zealand, however, you do need to be able to pick it up and bring your child in for a fitting. Trikes are allocated as they become available and are leased to families on a monthly basis for a fee of \$10 per month.

See overleaf for more information, terms and conditions, and the pre-assessment.



0800 503 603  
[cpsociety@cpsociety.org.nz](mailto:cpsociety@cpsociety.org.nz)  
DX Box CP 31005,  
Newmarket, Auckland  
[cpsociety.org.nz](http://cpsociety.org.nz)



# getOnYourTrike

## Terms & Conditions

### PROGRAMME DETAILS

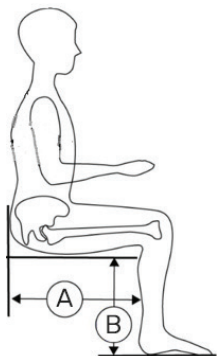
- The CP Society has a range of specially designed bikes for the use of our members with cerebral palsy. There are three sizes available that are suitable for children aged between 3 – 14 years.
- The programme is available to members throughout New Zealand, however you do need to be able to pick it up and bring your child in for a fitting. Trikes are allocated as they become available, and are leased to families on a monthly basis for a fee of \$10 per month.
- Families are required to set up a monthly automatic payment prior to receiving the bike.
- Costs associated with collection and return of the bikes to the CP Society in Newmarket, Auckland, are the responsibility of the user.
- If your getOnYourTrike application is successful, you will be required to sign a lease agreement prior to collection. A copy of the lease is available on our website [cpsociety.org.nz](http://cpsociety.org.nz).

### ELIGIBILITY

To be eligible for the getOnYourTrike programme, the child must:

- Have cerebral palsy. The Society may request proof that you have a clinical diagnosis of cerebral palsy.
- Be a current member of the Cerebral Palsy Society.
- Be prepared to undergo an assessment for suitability for the special trikes.
- Belong to a family prepared to pay the monthly lease fee of \$10/month

Note: People meeting the above criteria will not automatically be accepted into the programme. As such, determination will be based upon availability of trikes, previous use of the programme and history with the Society.



### PRE-ASSESSMENT

Please provide as much information as you can about the child that will be using the bike.

Height (m, approx.): \_\_\_\_\_ Weight (kg, approx.) \_\_\_\_\_

#### Able to walk independently?

Yes ☐ No ☐

#### Able to weight bear?

Yes ☐ No ☐

#### Uses a walker or walking frame?

Yes ☐ No ☐

#### Normally wears shoes?

Yes ☐ No ☐

#### Do you think your child will be able to pedal?

Yes ☐ No ☐

#### Do your child's knees cross/rub (inflexion)?

Yes ☐ No ☐

#### Do you think a seatbelt or similar is needed?

Yes ☐ No ☐

#### Normally uses a wheelchair or similar?

Yes ☐ No ☐

#### Does your child require postural support other than a bucket seat?

Yes ☐ No ☐

#### Range of leg and arm movement (describe):

---

---

---

#### Where will the Trike mainly be used (terrain, i.e.):

---

---

---

#### Measurement for A (cm):

#### Measurement for B (cm):

---

---

---